

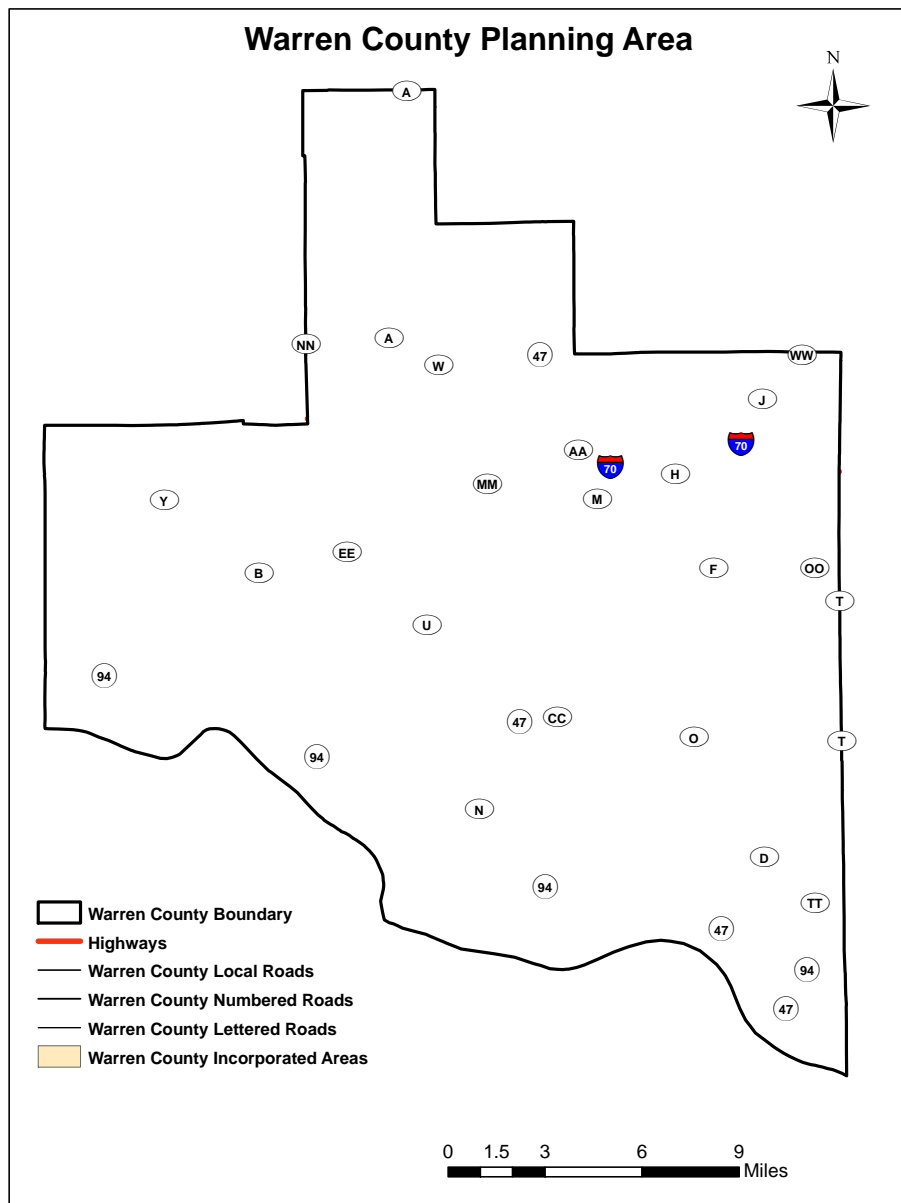
SECTION 2 – Planning Area Profile and Capabilities

Chapter 2 provides a general profile of Warren County followed by descriptions of each of the jurisdictions participating in this plan and their existing mitigation capabilities.

2.1 Warren County Planning Area Profile

Map below shows the Warren County planning area.

Map 2.1

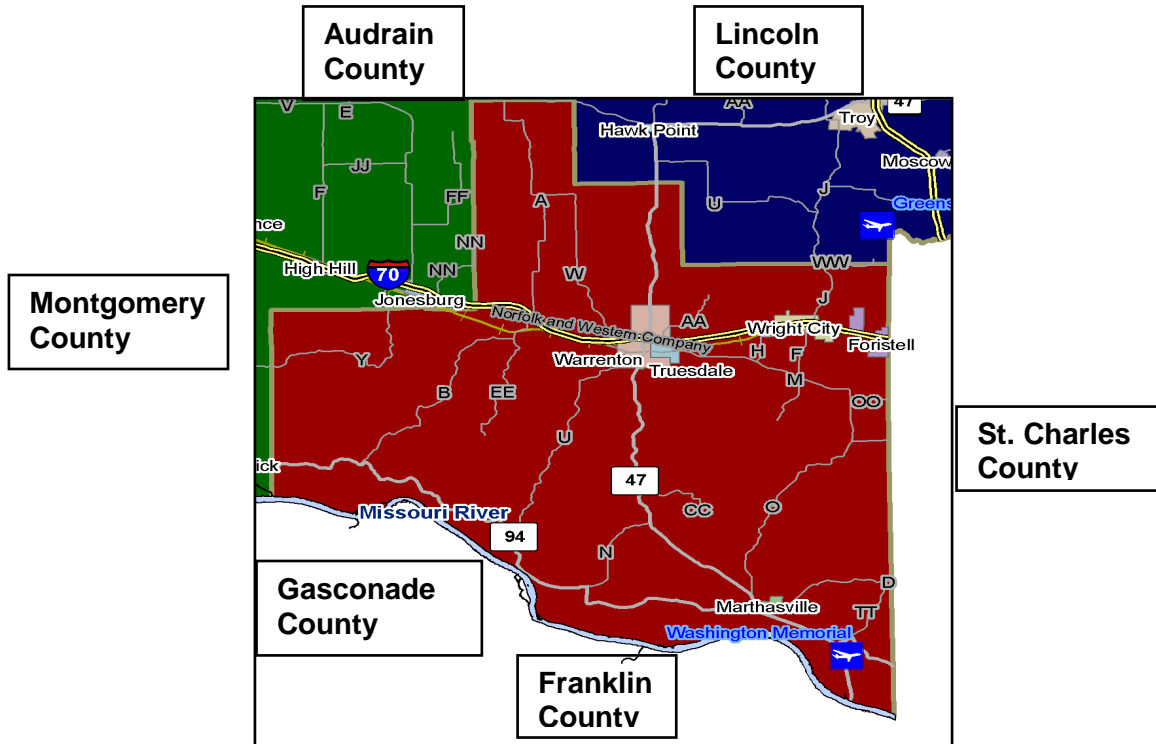


Source: Boonslick Regional Planning Commission, 2009

2.1.1 Geography and Topography

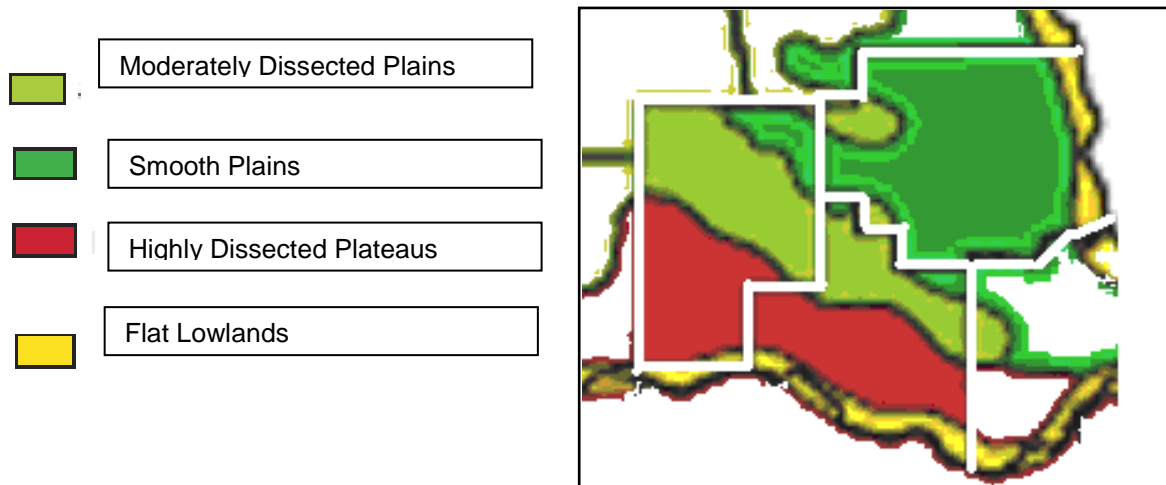
The county is just west of St. Charles County. The Missouri River forms the border for the southern edge of the county. Montgomery County lies to the west and Lincoln County to the northeast.

Figure 2.1 Warren County with roads and surrounding counties



Warren County encompasses approximately 429 square miles, or 274,560 acres. The Missouri River floodplain blankets the southern edge of the county in alluvium (silt, sand and gravel) up to 150 feet thick. Topography varies from river bottoms to rough hilly terrain to rolling hills and prairie as one moves north from the Missouri River.

Figure 2.2
Topographic Relief map of Boonslick Region (Montgomery, Lincoln & Warren)



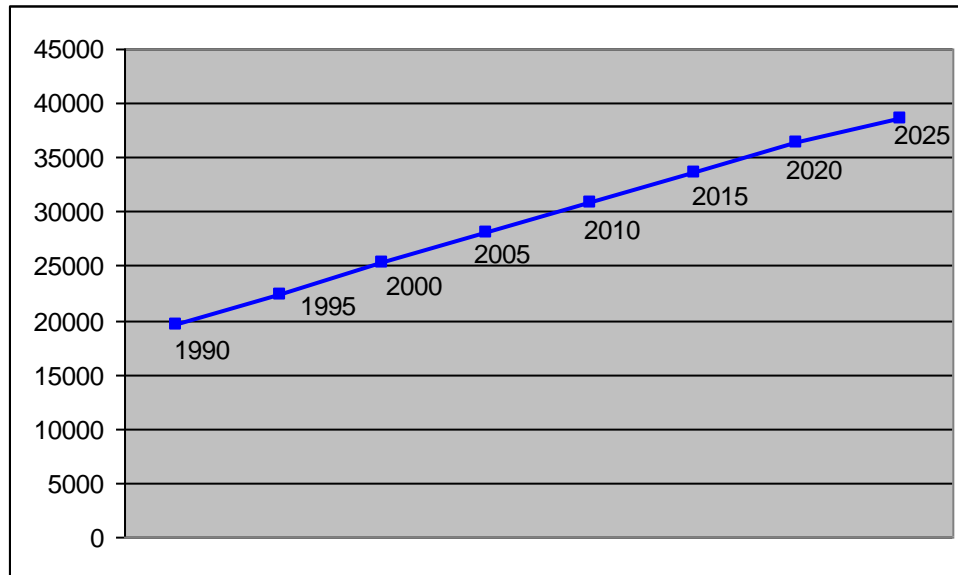
2.1.2 Climate

The climate is generally moderate. Temperatures, according to the National Weather Service (NWS) station at Lambert St. Louis Airport, range from an average high of 89 degrees in July to an average low of 21 degrees in January. Rainfall averages 4 inches per month during March through July while the average is 3 inches per month during September through December. January and February average only 2 inches, while snowfall averages 3-5 inches in the winter months. Average wind speeds range from 9 miles per hour in July to 13 miles per hour in March. Winter and spring winds are from the west northwest while summer winds blow primarily from the south.

2.1.3 Population/ Demographics

Warren County's population slowly declined from the turn of the century until 1950 and then began growing at an average rate until the 1970s. Between 1970 and 1980 the county's growth rate spiked at a 54% increase due to improved access to the St. Louis area via Interstate 70. From 1980 to 1990 the county grew by 4,634 people or 31%, and from 1990 to 2000 the region grew by 4,991 people or 27% to a total population of 24,525. Of Missouri's 114 counties, Warren County ranked 11th in percent of population increase between 1990 and 2000. Today, 80.1% of the population lives in rural areas. However, only 3.4% of the total population actually lives on a farm.

Chart 2.1 Projected population in Warren County (1990-2025)



Source: Missouri Office of Social and Economic Data Analysis (OSED)

Note: Projections are based on the 1990 Census.

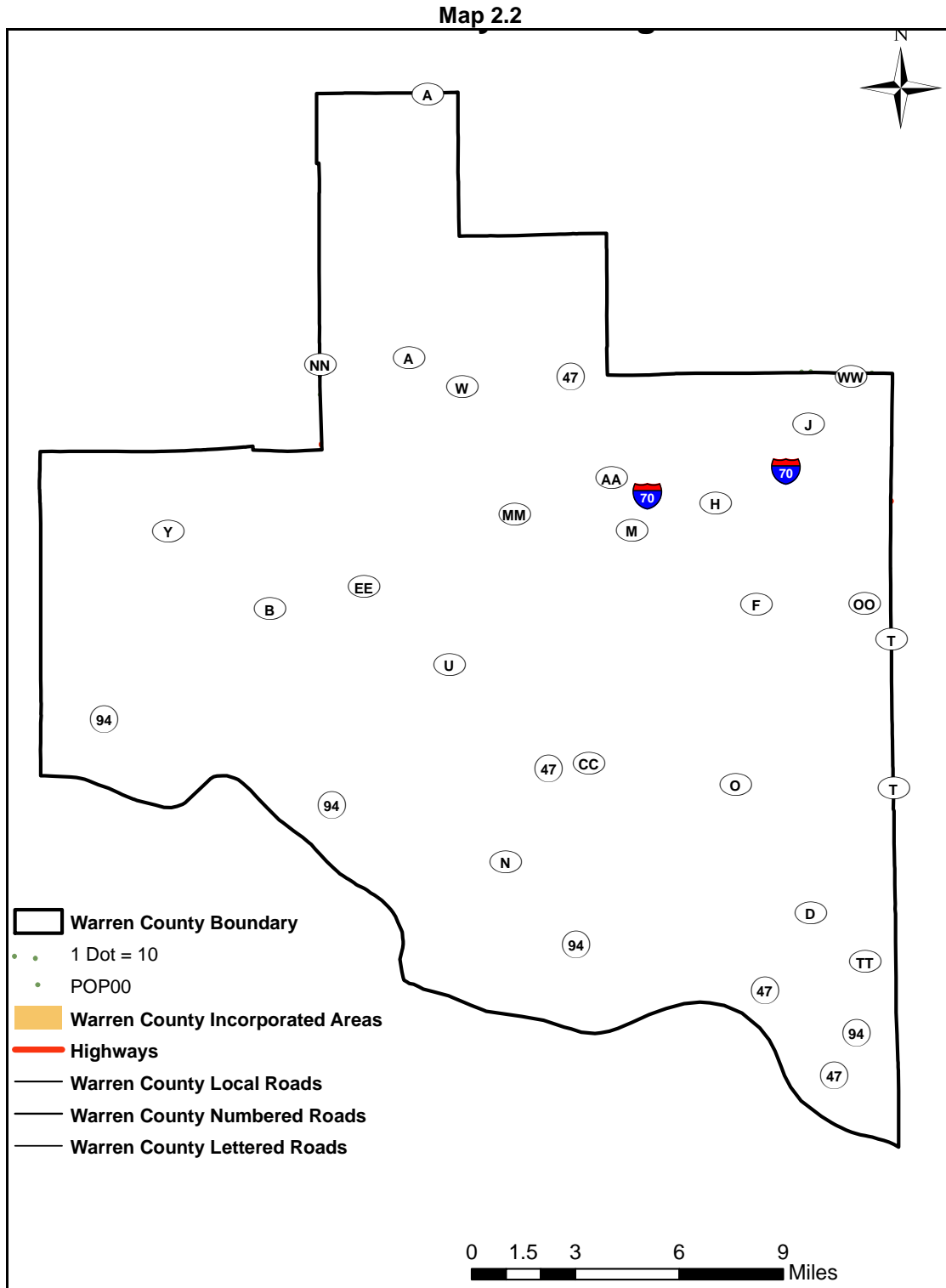
Population changes and housing units for each of the incorporated cities and the unincorporated County are provided in Table 2.1.

Table 2.1

Location	2000 Population	2007 Population	% Change 2000-2007	2000 Housing Units
Warren County	24,525	30,467	+24.2	11,046
Innsbrook	469	562	+19.8	1,072
Marthasville	837	859	+2.6	342
Pendleton	52	53	+1.9	NA
Truesdale	397	630	+58.69	171
Warrenton	5,281	7,155	+35.4	2,037
Wright City	1,532	2,797	+82.5	647

Source: U.S. Census Bureau

The population density map shown below reflects the county's population density of 23.4 persons per square mile.



Source: Boonslick Regional Planning Commission, 2009

2.1.4 History

In 1795 the renowned Kentucky hunter, Colonel Daniel Boone, established the first American colony in what is now Warren County. With the help of his son-in-law, Flanders Callaway, Callaway Post settlement was built near the current town of Marthasville. Boone family activities included surveying a road that helped link St. Louis and St. Charles with the interior of Missouri. The Boones used the road to transport manufactured salt to St. Louis and the road became known as Boonslick.

In January of 1833, the Missouri legislature declared a portion of Montgomery County to be a separate and distinct county to be known as Warren County. The county was named in honor of General Joseph Warren who fell at the battle of Bunker Hill. General Warren was a member of our country's first three provincial congresses and was the president of the third.

2.1.5 Economy/Industry

2.1.5.1 Labor Force, Average Wage Rate, Unemployment Rate

Fifty four percent of the county's total population had a labor force with workers 16 years and over. The average wage for the first quarter of 2000 was \$431 per week. Nearly 9% of the population, or 2,095 persons, were below the federal poverty level. The 2008 unemployment rate for Warren County was 4.3% compared to Missouri's 2008 rate of 7.3%.

2.1.5.2 Primary Industries

Continued automation in the manufacturing process has helped drive up the demand for the higher wages of skilled labor while requiring less employees to operate the systems. Warren County's primary products include pressed wood furniture, retail trade, truck gears, developmental disabilities services, recreation, print production, laminated paper, and bottled beverages.

Employment within the county, as of 2007, consists of 20.2% manufacturing, 15.7% education/health/social services, 13% retail trade, 12.9% construction, and 2.3% government. The remaining 36% includes finance, insurance, real estate, transportation, public utilities, wholesale trade, agricultural, forestry, fishing and mining.

Table 2.2 Warren County Economic Indicators		
	Number	Percent
Civilian labor force	15,761	54
Employed	14,901	51
Unemployment rate	5.5%	(X)
INDUSTRY EMPLOYEES		
Agriculture, forestry, fishing, hunting, mining	298	2
Construction	1,923	12.9
Manufacturing	3,010	20.2
Wholesale trade	447	3
Retail trade	1,937	13
Transport, warehouse, utilities	865	5.8
Information	432	2.9
Finance, insurance, real estate, rental, leasing	625	4.2
Professional, scientific, management, administrative, waste management services	819	5.5
Educational, health, social	2,339	15.7
Arts, entertainment, recreation, accommodation	953	6.4
Other services (except public administration)	908	6.1
Public administration	342	2.3
Per capita income (dollars)	28,881	(X)
Individuals below poverty level	2,095	(X)
Percent of total population	(X)	8.6

(X) Not applicable.

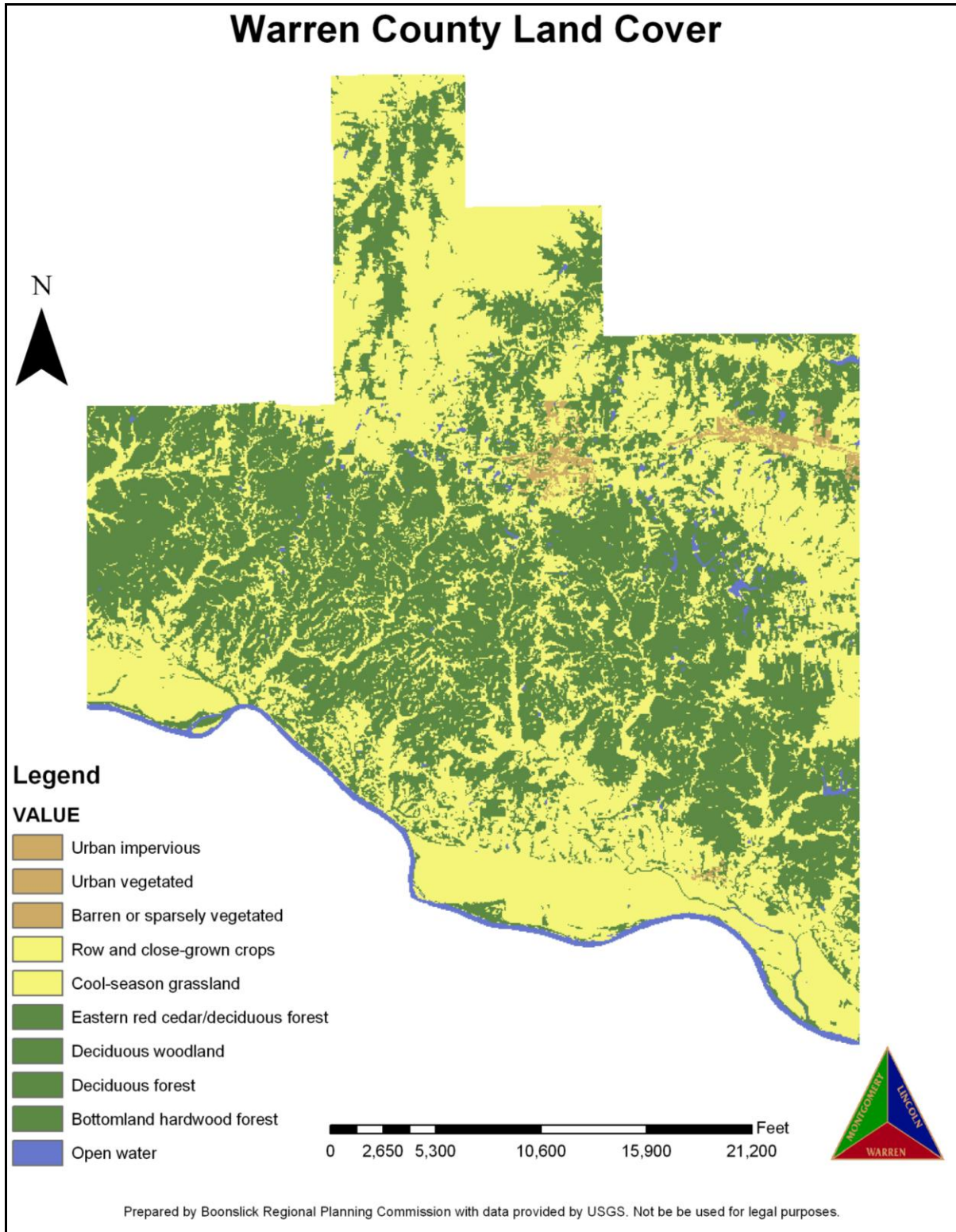
Source: U.S. Census 2000, Summary File DP-3 & STATS
INDIANA

According to Missouri Economic Research and Information Center (MERIC), in 2008 Warren County had 907 businesses with 1-9 employees, 178 with 10-49 employees, 23 with 50-99 employees, 6 with 100-249 employees and 3 with 250 or more employees.

2.1.6 Land Use Information

Most of the county (73%) is forested as shown on the land cover map. The remainder primarily is divided between agricultural land and urban development. In the past few years, agricultural land has continually decreased in the face of increased urban development. There was an increase of 7.2 percent from 2007 (723 farms) to 2002 (670 farms).

Map 2.3



2.2 Jurisdictional Descriptions and Capabilities

Warren County, named in honor of Gen. Joseph Warren, who fell at the battle of Bunker Hill, was established on January 5, 1833. It was part of Montgomery County before incorporation. However, before the formal incorporation the area was well established by Native Americans, and French and German immigrants.

Village of Innsbrook

Overview

The village has a total area of 9.6 sq. miles, of which, 9.0 sq. miles of it is land and 0.7 sq. miles of it is water. Although the Village of Innsbrook was formally incorporated in July of 1998, the community has existed much longer. Innsbrook started as a get-away community of seasonal living in 1971. From there, it evolved into a golf course, conference center, year round living, cultural center and more. Through tireless efforts by concerned people and residents of the area, the Village of Innsbrook was incorporated in 1998 with the intent to have a stronger voice in what developed in the vicinity and to preserve the existing integrity and identity of the region.

City of Marthasville

Overview

Marthasville is located near the site of the early 1763 French fur trading post named La Charrette The Missouri, Kansas and Eastern Railroad was completed through Marthasville in the winter of 1892 and taken over by the Missouri, Kansas and Texas Railroad in July of 1893. The area is also full of historical importance, both local and national. The region was widely settled by German immigrants during the 1800's who brought their wine making skills with them and were attracted to this Missouri River Valley which has become known as the Missouri Rhineland.

City of Warrenton

Overview

The City of Warrenton was founded in 1864. It is the county seat of Warren County. Warrenton and the adjacent city of Truesdale are home to the Warren County R-III School District, which is fully accredited in the state of Missouri. Warrenton has direct access to both rail and interstate traffic via Interstate 70.

City of Wright City

Overview

The City of Wright City was platted as a village in 1857 by Doctor Henry C. Wright on land granted to Dr. Wright in 1831 by the United States. The village was platted to take advantage of the new North Missouri Railroad which was constructed in 1857. In September, 1863 the Wright City Raid took place during the Civil War. The town of Wright City was incorporated in 1869 and became a fourth class city in 1941.

Table 2.3 Brief jurisdictional description and capability matrix for Warren County

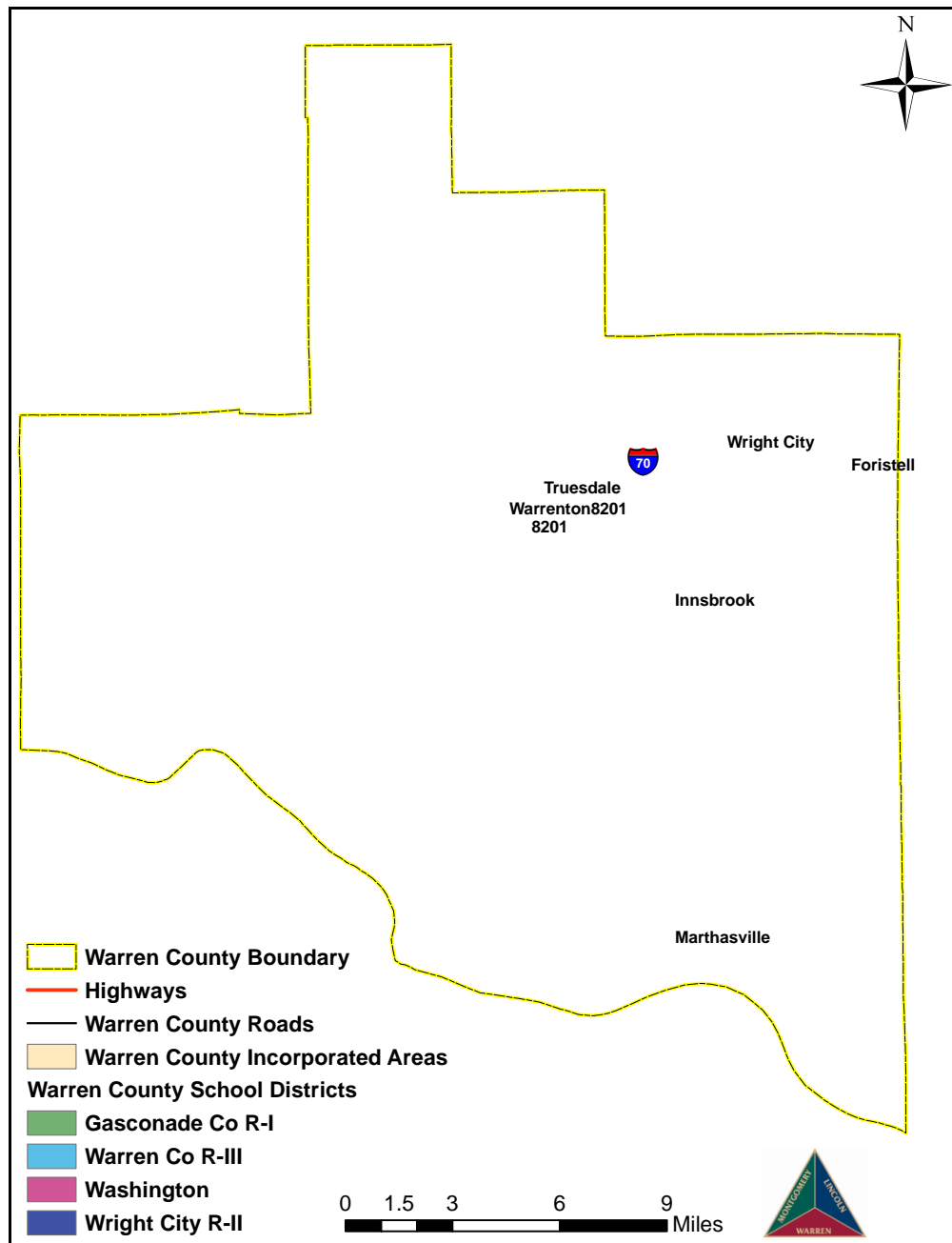
Category	Warren County	Innsbrook	Marthasville	Truesdale	Pendleton	Warrenton	Wright City	All Cities
Total Pop.	30,647	562	859	630	52	7,155	2,797	6350
Classification	County-third class	Village-fourth class	City-third class	City-fourth class	Village-fourth class	City-Fourth Class	City- Fourth Class	Various
Leadership	Presiding Commissioner/ Associates	Chairman/Trustees	Mayor/Council	Mayor/Council	Chairman/Trustee	Mayor/Council	Mayor/Council	4 mayor/council, 1 chairman/trustees
Med. Income	\$41,016	\$65,833	\$41,141	\$28,359	N/A	\$34,022	\$30,179	\$39,907
Housing Units	11,046	1,0872	342	171	N/A	2,037	647	4,269
Med. Gross Rent	\$466	N/A	\$413	\$500	N/A	\$468	\$362	\$349
Med. Housing Value	\$101,600	\$217,400	\$78,900	\$25,800	N/A	\$86,600	\$66,100	\$94,960
Master Plan	Yes	Yes	No	Yes	no	Yes	Yes	4yes,1 no
Zoning Regs	Yes	Yes	No	No	no	Yes	Yes	3yes,2 no
Building Regs	No	Yes	No	No	no	Yes	Yes	3 yes, 2 no
Subdivision Regs	Yes	Yes	Yes	Yes	no	Yes	Yes	5 yes
Stormwater Regs	No	Yes	Yes	No	no	Yes	Yes	4 yes, 1 no
Floodplain Regs	Yes	Yes	Yes	No	no	Yes	Yes	4 yes, 1 no
NFIP Participation	Yes	No	Yes	Yes	no	Yes	Yes	5 yes, 2 no
Water Service	Various	St.Charles County PWSD 2	Marthasville	Truesdale	Private	Warrenton	Wright City	5 cities provide service
Sewer Service	Various	Innsbrook & private septic	Marthasville	Warrenton	Private	Warrenton	Wright City	5 cities provide service
Electric Service	Ameren UE, Cuivre River	Cuivre River	Ameren UE	Ameren UE	Ameren UE	Ameren UE	Ameren UE & Cuivre River	Ameren & Cuivre River
Fire Service	Various	Wright City	Marthasville	Warrenton	Warrenton	Warrenton	Wright City	5 cities provide service
Ambulance Service	Various	Wright City	Marthasville	Warren County	Warren County	Warren County	Warren County	2 cities provide service, 3 cities

Category	Warren County	Innsbrook	Marthasville	Truesdale	Pendleton	Warrenton	Wright City	All Cities
								use Warren County
Rivers, streams	Missouri River, Charrette Creek, Tuque Creek, North Fork Charrette Creek, Peruque Creek, Camp Creek, Hickory Lick Creek, Lost Creek, Massie Creek, Little Lost Creek, Cullum Branch, Loutre Slough, Clear Branch, Smith creek, Peers Slough, Wolf Creek, Indjan Camp Creek, Dry Creek, Engemann Spring.	Charrette Creek	Charrette Creek, Tuque Creek	North Fork, Charrette Creek		Big Creek	Peruque Creek	N/A
Major Arterials	US I-70; Mo. Highways 47, 94, M, MM, U, B, A, F, H, D, o, W, Y	Mo. Hwy.F	Mo. Hwy.47, Mo. Hwy.D	Mo. Hwy. M, Norfolk	Mo.Hwy.B, US I-70, Norfolk & Southern Railroad	US I-70;Mo. Hwys 47, M, MM, U, W	US I-70, Mo. Hwy. F & H	N/A
Railroads	Norfolk & Southern	NA	Norfolk & Southern	Southern railroad		Norfolk & southern	Norfolk & southern	N/A

2.2.2 School Districts

The 4 school districts in the County are Warren County R-III School District, Wright City R-II School District, Gasconade County School District, and Washington School District. Map 2.4 provides the boundaries of the school districts participating in this plan.

Map 2.4 shows the school districts served by Warren County



Source: Boonslick Regional Planning Commission, 2009

Table 2.4. Schools in participating districts with reported 2008-2009 Enrollment

Name of the School District	No. of Schools	2008-2009 Enrollment
<i>Warren County R-III School District</i>	5	3035
Elementary Schools	3	1372
Middle Schools	0	0
Jr. High Schools	1	710
High Schools	1	953
<i>Wright City R-II School District</i>	3	1518
Elementary Schools	1	604
Middle Schools	1	454
High Schools	1	460
<i>Washington School District (Elementary Schools)</i>	1	228
<i>Gasconade County R-I School District</i>	3	1080
Elementary Schools	1	280
Middle Schools	1	392
High Schools	1	408

Source: Missouri Department of Elementary & Secondary Education